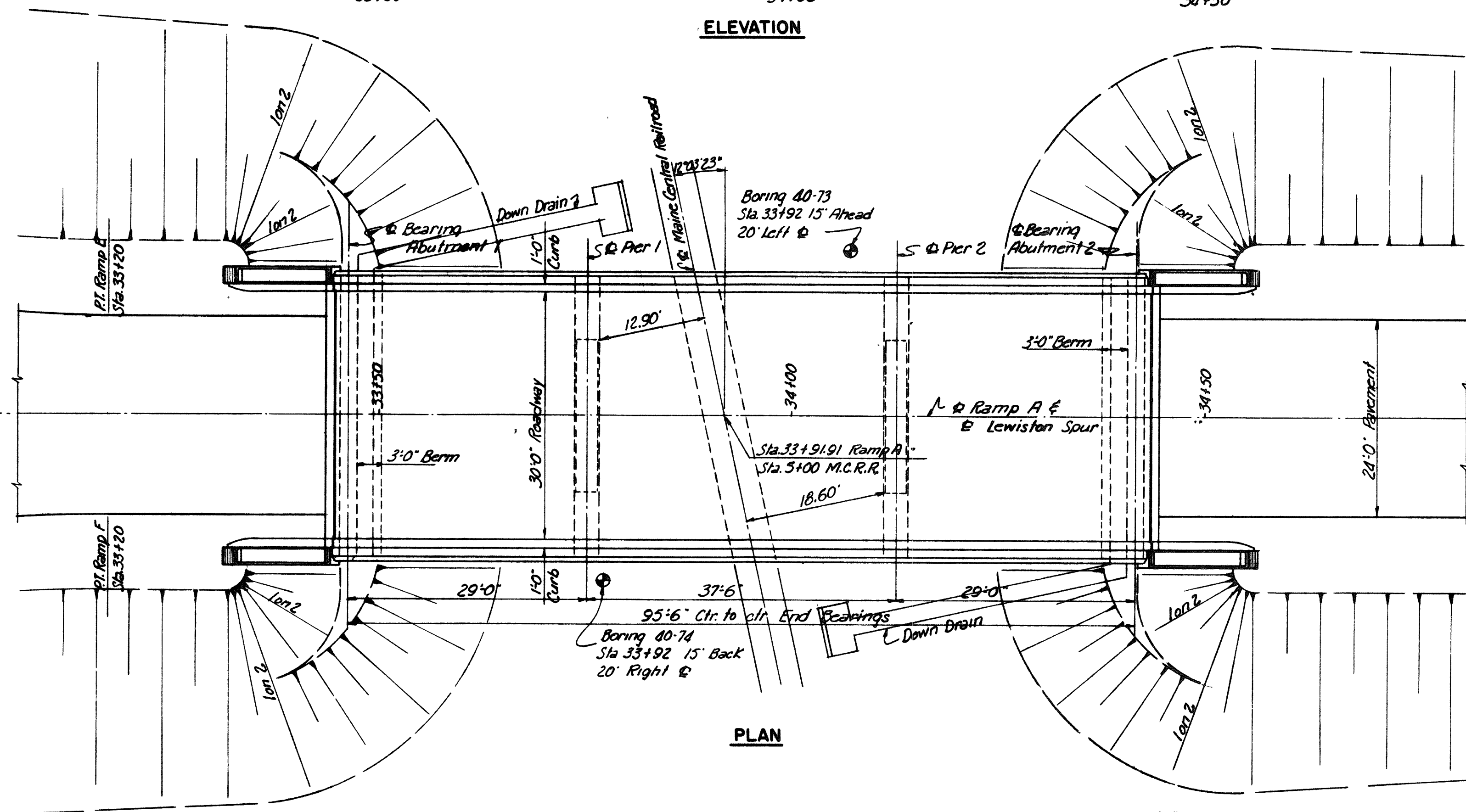
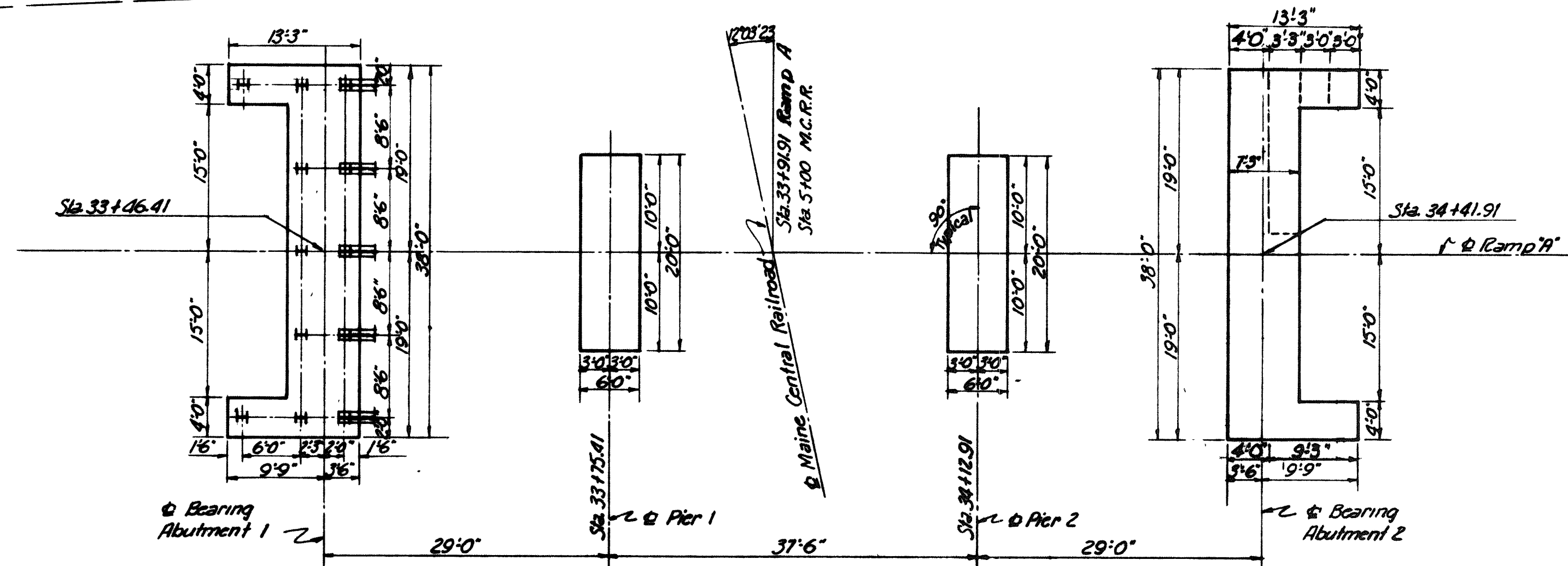


ELEVATION



PLAN



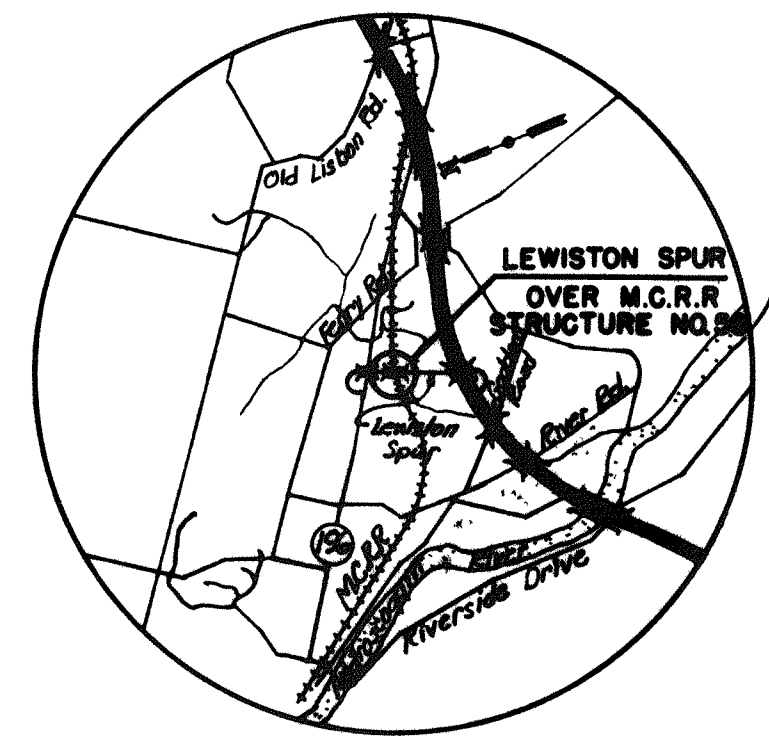
FOOTING PLAN

GENERAL NOTES

Design Specifications: AASHO-1953 with minor modifications.
 Design Live Load: H20-S16
 Maximum Pile Load for Abutments: 276 Tons per Pile.
 Maximum Soil Pressure for Piers: 4.7 Tons per sq. ft.
 Bridge Floor cross slope is $\frac{1}{8}$ " per ft.

REFERENCES

Standard Drawing Number	Title	Substructure Contractor	Superstructure		
			Steel Fabricator	Steel Erector	Floor Contractor
1A	Standard Abutment Details	✓	✓	✓	✓
2	Standard Pier Details	✓	✓	✓	
3	Standard Abutment Drainage Details	✓			
4	Standard Pile Details	✓			
5	Standard Handrail, Bearing Devices And Miscellaneous Details	✓	✓	✓	✓
6	Standard Diaphragm Details		✓	✓	✓
11A	Type "X" And "Y" Expansion Joints Expanding Length to 100 Feet	✓	✓	✓	✓
22	Standard Bridge Floor Cross Sections 26'-0" And 30'-0" Roadways	✓	✓	✓	✓

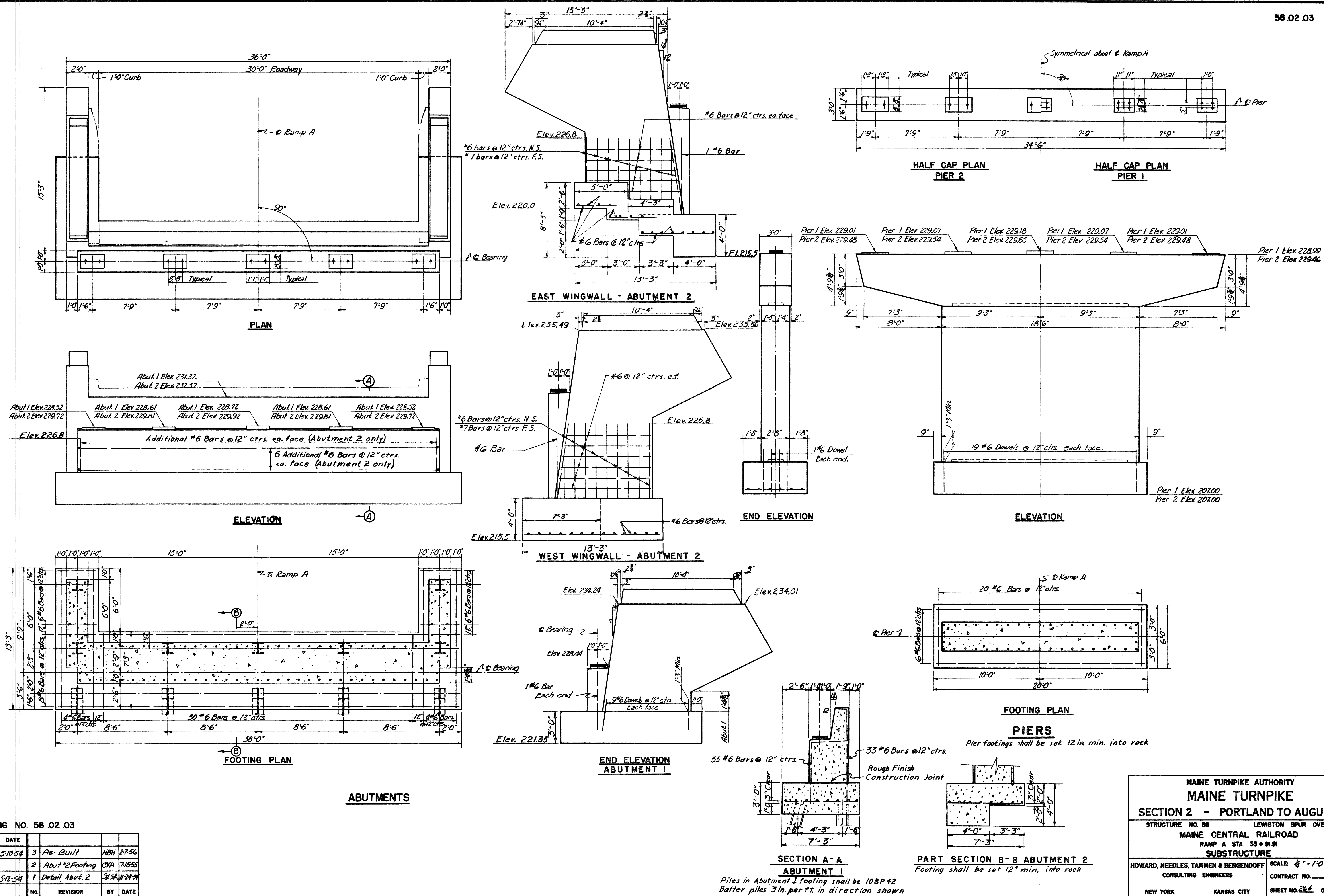
VICINITY MAP
Scale: 1" = 1 mile

DRAWING NO. 58.01.03

MADE	BY	DATE	NO.	REVISION	BY	DATE
TRACED	AER	5-6-54	2	As-Built	NBN	2-25-56
CHECKED	R.F.S.	5-13-54	1	Chgd Abut 2	G.G.B.	1-1-56
IN CHARGE OF	10SK					

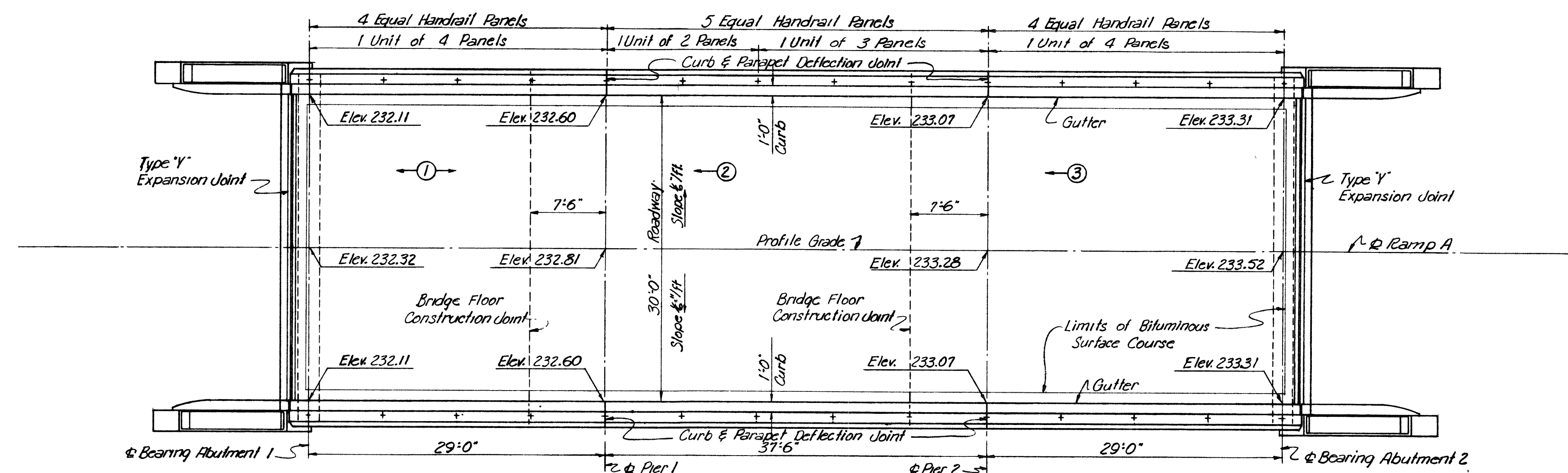
Note:
 Piles in Abutment 1 Footing shall be 10 BP42.
 Batter Piles 3 in per ft in direction shown.
 Pier Footings shall be set 12 in. min. into rock.
 Abutment 2 Footing shall be set 6" min. into rock.

MAINE TURNPIKE AUTHORITY MAINE TURNPIKE SECTION 2 - PORTLAND TO AUGUSTA	
STRUCTURE NO. 58	LEWISTON SPUR OVER
MAINE CENTRAL RAILROAD RAMP A STA. 33+91.91	
GENERAL PLAN AND ELEVATION	
HOWARD, NEEDLES, TAMMEN & BERGENDOFF CONSULTING ENGINEERS NEW YORK KANSAS CITY	SCALE: $\frac{1}{8}$ " = 1'-0" CONTRACT NO. _____ SHEET NO. 262 OF 322

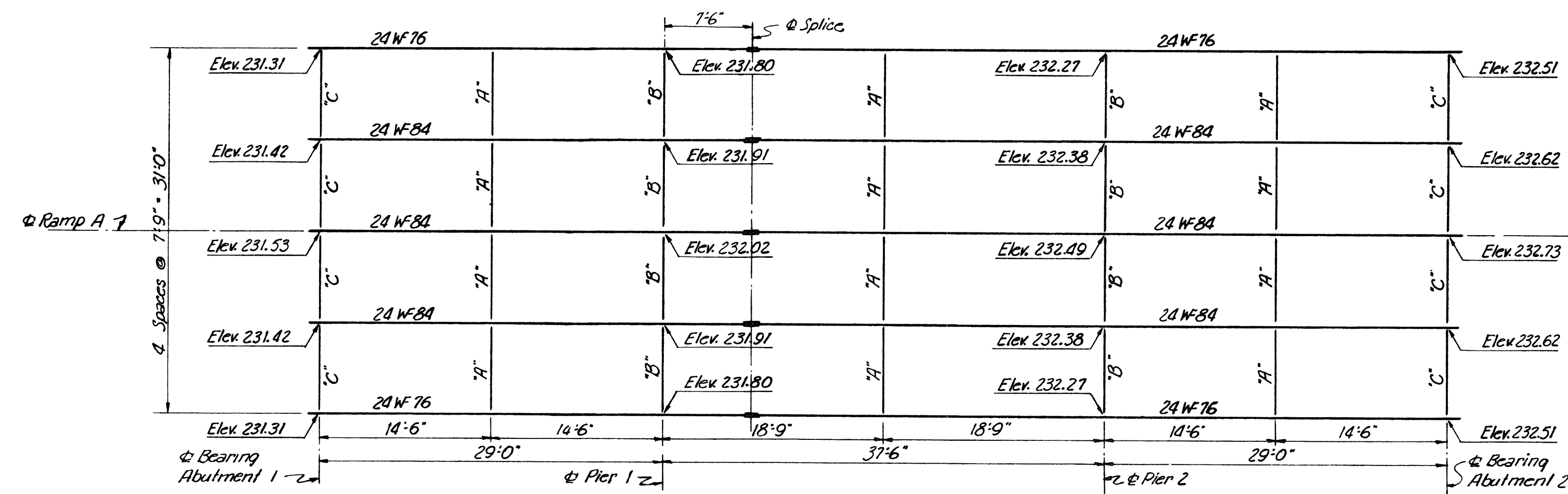


DRAWING NO. 58.02.03					
	BY	DATE			
MADE	A.E.B.	5-10-54	3	As-Built	H.B.H. 27-54
TRACED			2	About 1/2 Footing	C.V.A. 7-15-55
CHECKED	R.F.S.	5-12-54	1	Detail About 2	B.Y.S. 11-21-54
IN CHARGE OF I.D.S.K.			No.	REVISION	BY DATE

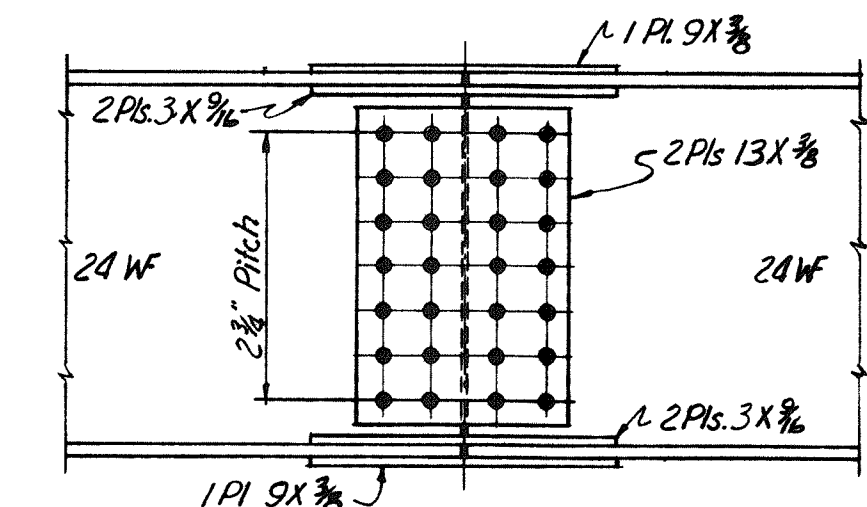
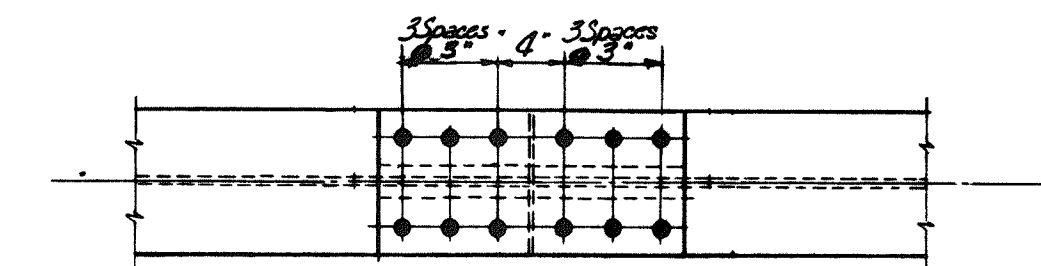
MAINE TURNPIKE AUTHORITY	
MAINE TURNPIKE	
SECTION 2 - PORTLAND TO AUGUSTA	
STRUCTURE NO. 50	LEWISTON SPUR OVER
MAINE CENTRAL RAILROAD	
RAMP A STA. 33 + 91.81	
SUBSTRUCTURE	
HOWARD, NEEDLES, TAMMEN & BERGENDOFF CONSULTING ENGINEERS	SCALE: 1/4" = 1'-0"
NEW YORK	CONTRACT NO. _____
KANSAS CITY	SHEET NO. <u>261</u> OF <u>382</u>



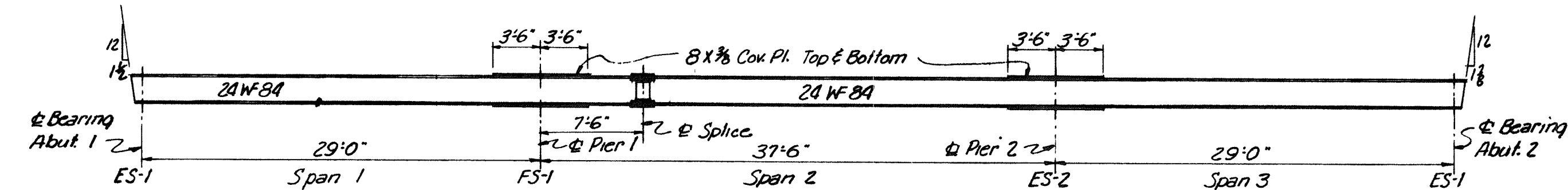
FLOOR PLAN



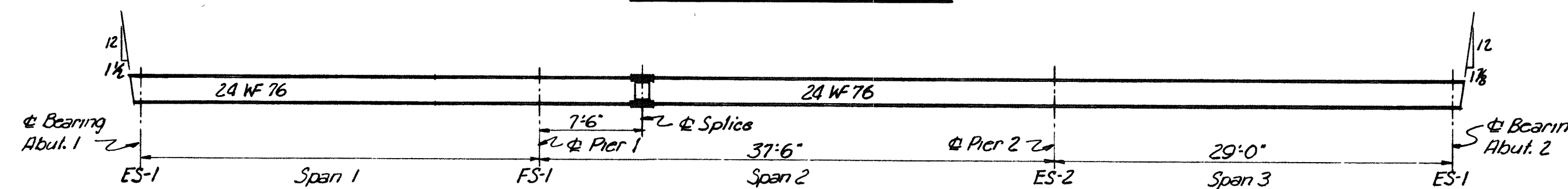
FRAMING PLAN



BEAM SPLICE

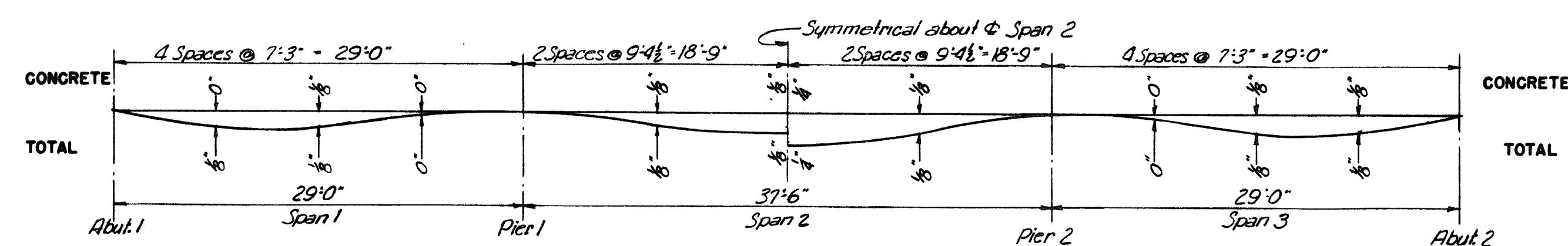


INTERIOR BEAM ELEVATION



EXTERIOR BEAM ELEVATION

Note:
Elevations shown on Floor Plan are to top of finished Roadway. Sequence and direction of placing concrete are noted thus—⑤. Use 6" slab (non-composite) with 2" Bituminous Wearing Surface as shown on Standard Drawing No. 22. Elevations shown on Framing Plan are to top of Beam Flanges. Diaphragms are noted by the letters "A", "B" & "C". Bevels shown at beam ends are with respect to beam axis. Additional stiffener angles at points of support along outside face of Exterior Beams shall be 4X4X3/8.



INTERIOR BEAMS

EXTERIOR BEAMS

DEAD LOAD DEFLECTION DIAGRAM
No Scale

DRAWING NO. 58.03.03

BY	DATE				
MADE	AER	5-7-54			
TRACED					
CHECKED	R.F.S.	5-13-54	1	As-Built	HBH 2756
IN CHARGE OF	LDK		No	REVISION	BY DATE

MAINE TURNPIKE AUTHORITY MAINE TURNPIKE	
SECTION 2 - PORTLAND TO AUGUSTA	
STRUCTURE NO. 58	LEWISTON SPUR OVER
MAINE CENTRAL RAILROAD	
RAMP A STA. 33+91.91	
SUPERSTRUCTURE	
HOWARD, NEEDLES, TAMMEN & BERGENDOFF CONSULTING ENGINEERS	SCALE: 1/4" = 1'-0"
NEW YORK KANSAS CITY	CONTRACT NO. _____
	SHEET NO. 262 OF 382

NEW YORK
KANSAS CITY

CONSULTING ENGINEERS
HOWARD, NEEDLES, TAMMEN & BERGENDORF

SCALE: 3/16" = 1'-0"

SHEET NO. 28 OF 32

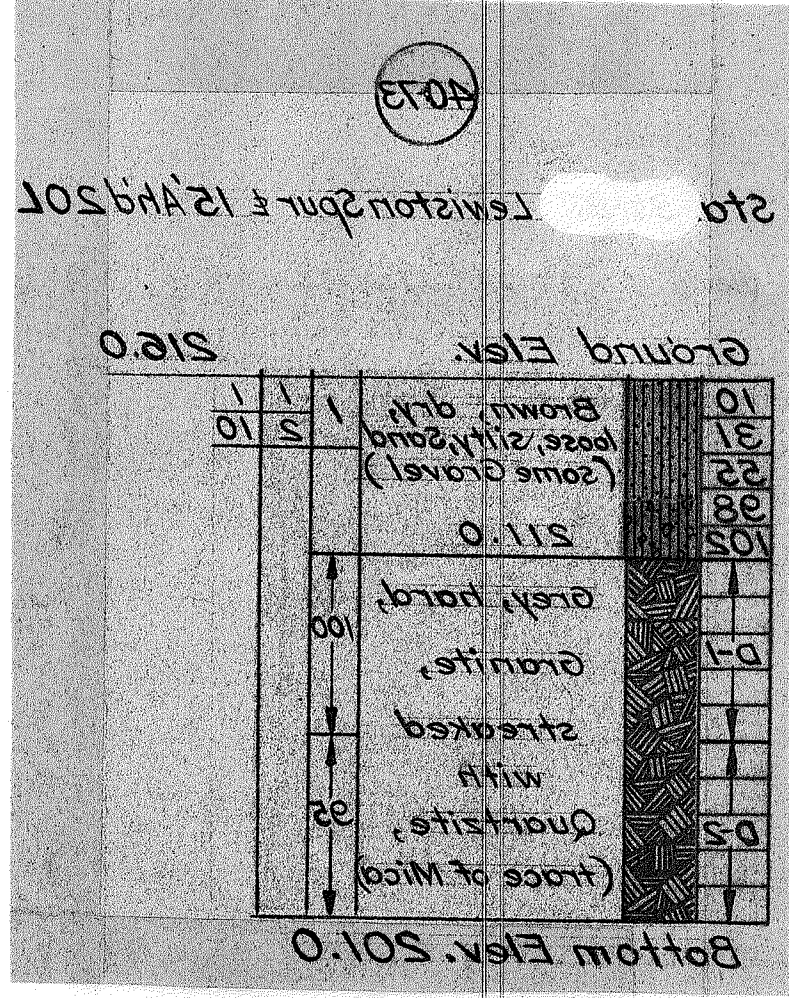
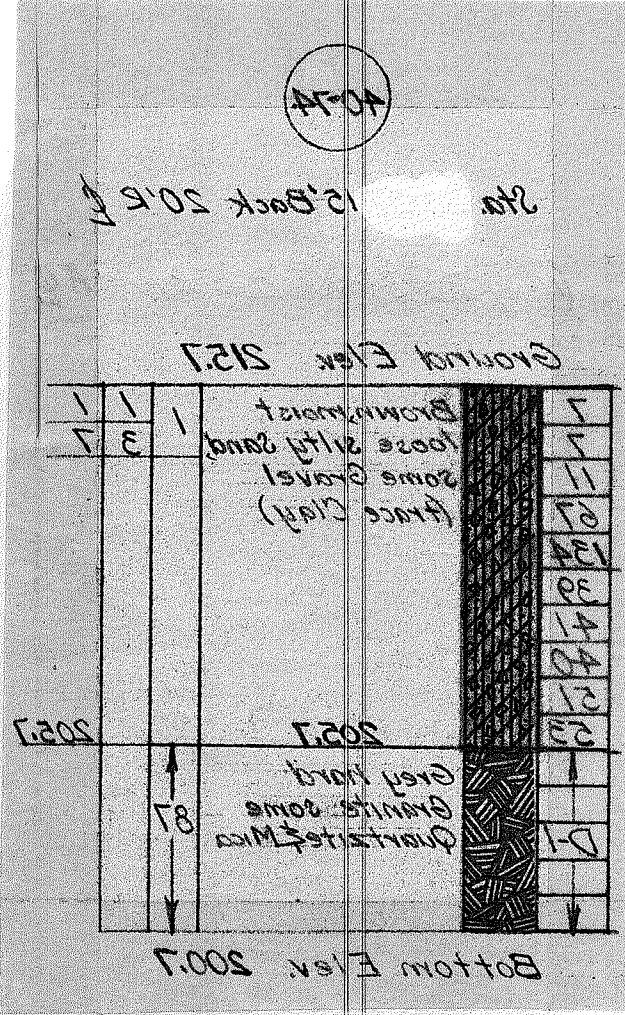
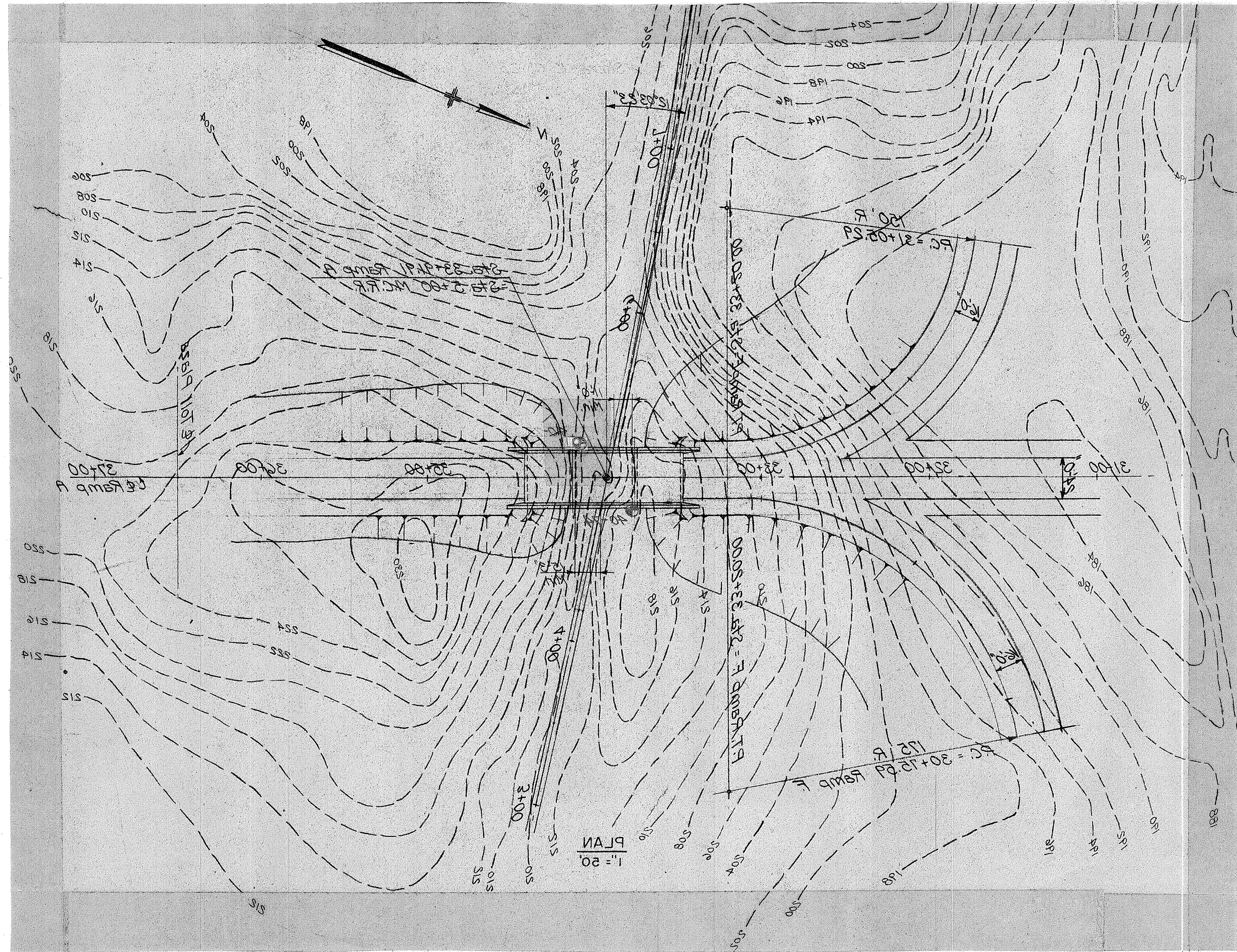
MAINE TURNPIKE
SECTION 2- PORTLAND TO AUGUSTA
MAINE CENTRAL R.R. OVERPASS
LEWISTON INTERCHANGE
BORINGS

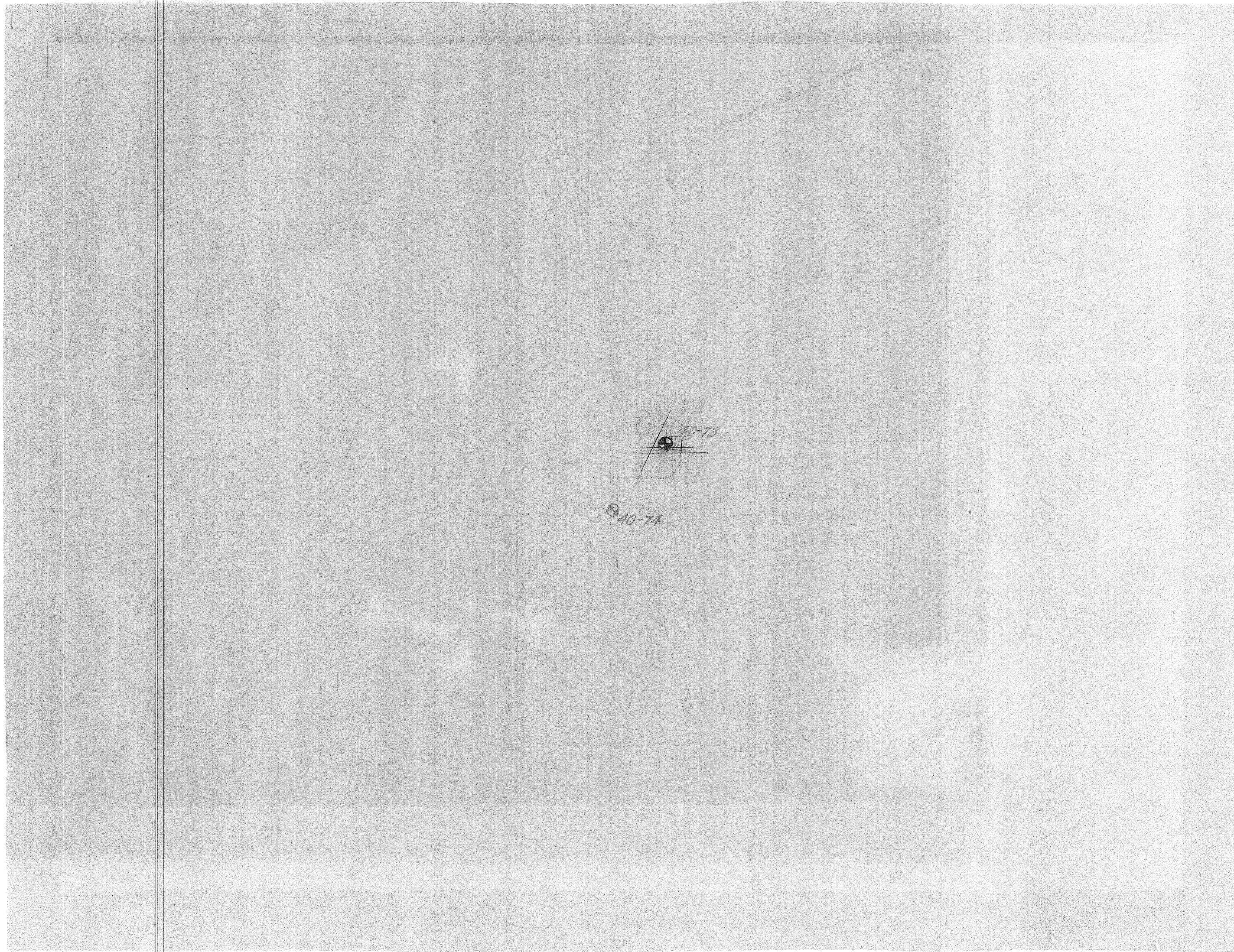
MAINE TURNPIKE AUTHORITY

NOTE:
All borings on this sheet taken
on & unless otherwise noted

NOTE:
None of the data shown
on this drawing is guaranteed
to be correct and is
furnished for the Contractor's
information only and such
use as he may care to make
of it

IN CHARGE OF		REVISION		BY		DATE	
No.		Revision		BY		DATE	
CHECKED							
TRACED							
MADE							





33+92
(New) Sta. 33+80 20R Ramp A E

33+92
(New) Sta. 34+10 20L Ramp A E

	BY	DATE				
MADE	RBW	4/15/54				
TRACED						
CHECKED						
IN CHARGE OF			No.	REVISION	BY	DATE

MAINE TURNPIKE AUTHORITY	
MAINE TURNPIKE	
SECTION 2— PORTLAND TO AUGUSTA	
MAINE CENTRAL R.R. OVERPASS	
LEWISTON INTERCHANGE	
BORINGS	
HOWARD, NEEDLES, TAMMEN & BERGENDOFF CONSULTING ENGINEERS	SCALE: 3/16" = 1.0'
NEW YORK KANSAS CITY	CONTRACT NO. _____
	SHEET NO. 328 OF 3